

QUICK SHIP SPEC SHEET

1 CIRCUIT TRACK

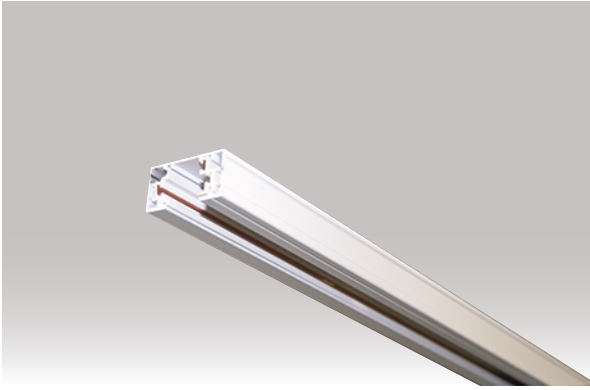


SPECIFICATION SHEET

PAGE: 1 OF 1

Project name: _____

Type: _____



General information

Mounting: Surface mount.

Body: Extruded aluminum.

Electrical: 120V one circuit with line voltage dimming capability.

Finish:

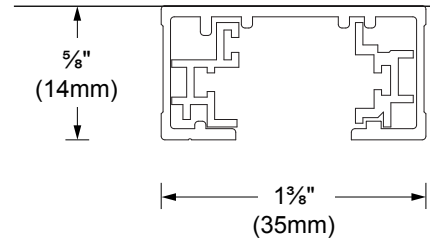
Track: Gray or black painted.

Accessories: Black or gray color.

Warranty: 5 years limited warranty.

Certification: cULus listed.

Ratings: Dry location.



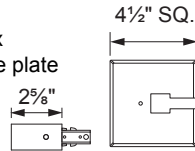
SECTION VIEW

ELECTRICAL COMPONENTS (TO BE ORDERED SEPARATELY)

Feedable connexions

02 - Black 10 - Gray

8014-3C - End feeder with 4" Jbox mounting kit and square plate



8020-3C - Straight connector



ORDERING INFO

MODEL	FINISH
<input type="radio"/> 8004-3C - 4'L	<input type="radio"/> 02 - Black
<input type="radio"/> 8008-3C - 8'L	<input type="radio"/> 10 - Gray

DUE TO CONTINUOUS IMPROVEMENTS, THE INFORMATION HEREIN MAY BE CHANGED WITHOUT NOTICE.

LAST UPDATE: JUNE 15, 2015

MGD - R0

SISTEMALUX



9320 Boul. St-Laurent,
suite 100, Montréal (Québec)
Canada H2N 1N7
P.: 514.523.1339 F.: 514.525.6107
www.sistemalux.com